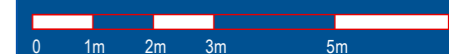


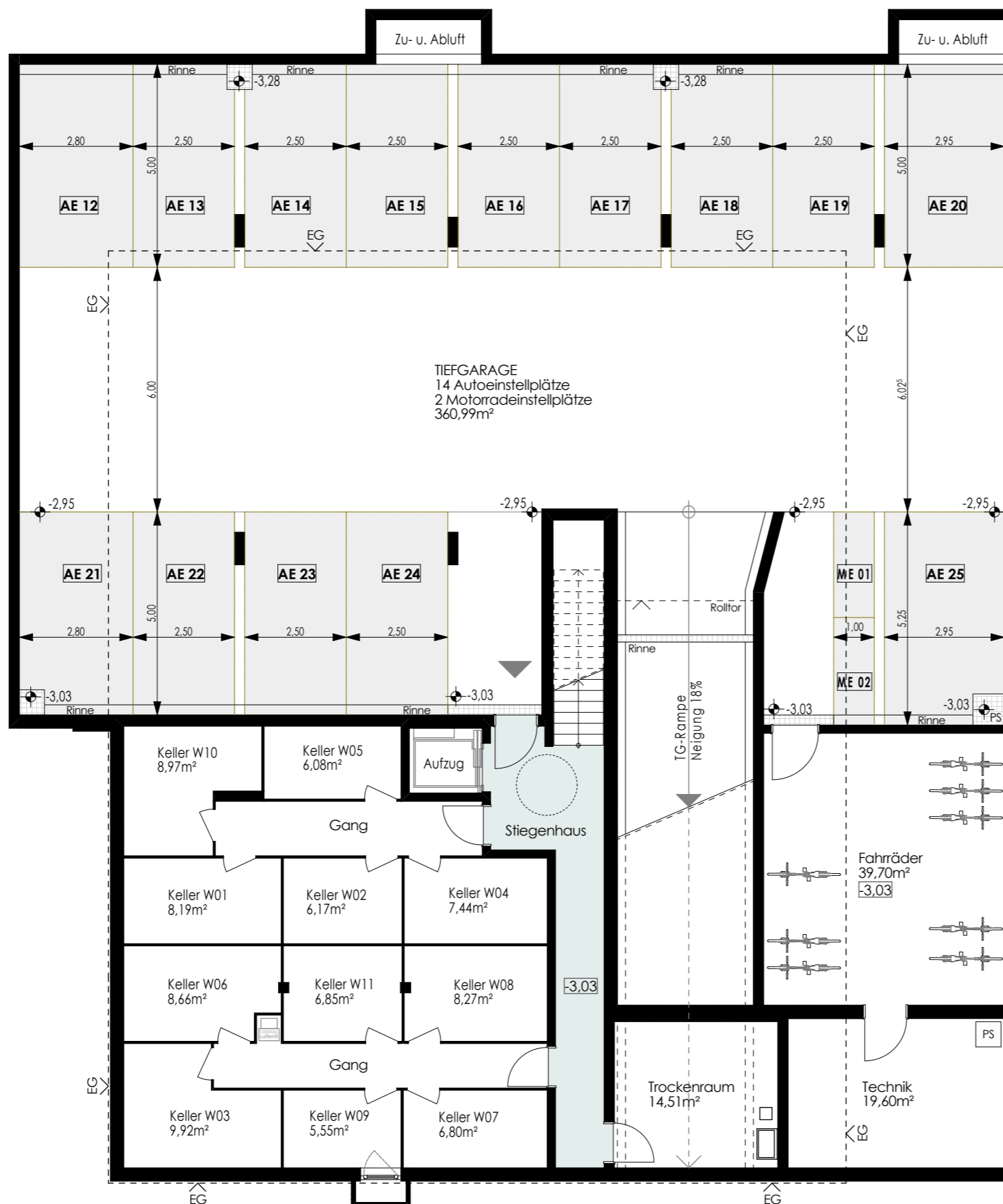
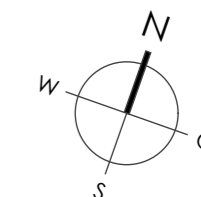
Wohnanlage Steinacker Dornbirn

Maßstab: 1:125 Stand: Feb. 2024



Untergeschosse

Kellerabteile Tiefgaragen



Haberl Baugesellschaft m.b.H
Hohenemser Straße 17
6890 Lustenau
Tel. 0 55 77 8 64 69
office@haberlbau.at
www.haberlbau.at

